

# WON-DOOR

FireGuard CC/CS  
Cross Corridor/Compressed Stack

# FIREGUARD™

**F**ounded in 1962, The Won-Door Corporation introduced the world's most durable acoustically rated folding partition. In 1977 the company pioneered the development of the first-ever accordion type, fire rated horizontal sliding door. Today, 50 years later, Won-Door remains the industry leader in the manufacture of fire doors and moveable firewalls. Technology developed by Won-Door engineers continues to influence the building products and fire protection industries.



## WON-DOOR CORPORATION

Salt Lake City, UT  
800.453.8494

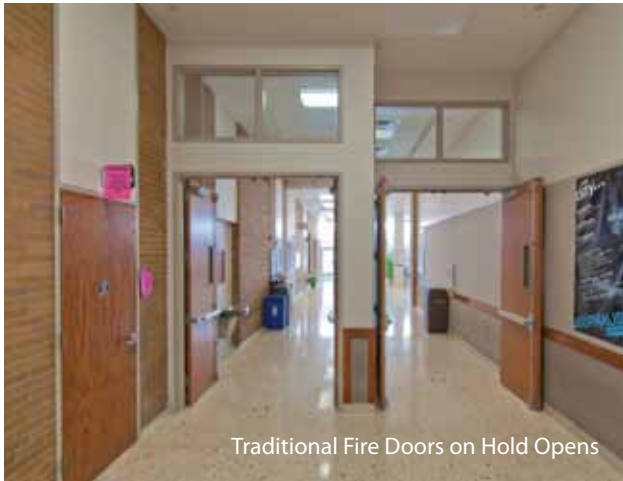
[www.wondoor.com](http://www.wondoor.com) | [sales@wondoor.com](mailto:sales@wondoor.com)

## Finally... A Cost-Effective Alternative to Fire Doors on Hold Opens

- Unobstructed corridors
- No exposed hardware
- Low life cycle costs
- Integrated pocket cover door
- UL1784 smoke label
- UL10B fire ratings up to 180 minutes
- Meets IBC and NFPA Egress Requirements
- LEED: Regional Sourced Material
- LEED: Constructed of 25% post consumer/industrial content
- LEED: Daylight and views, allow more light and air into interior spaces
- LEED: Innovation in Design, improved interior environmental quality



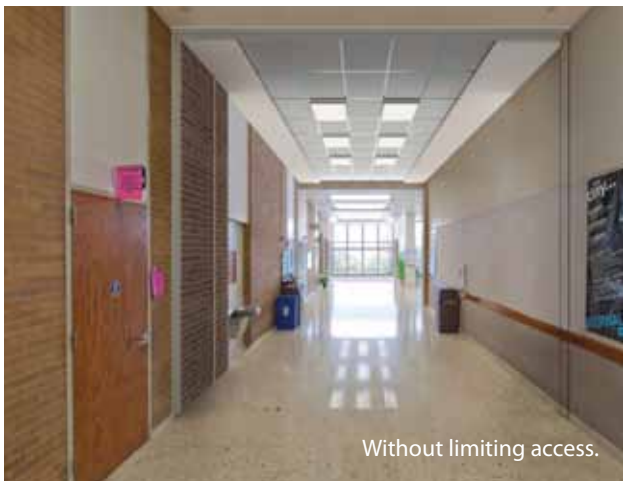
# WON-DOOR FIREGUARD™ CS (Compressed stack)



Traditional Fire Doors on Hold Opens



Won-Door FireGuard™ CC/CS provides a means of egress.



Without limiting access.

## SETTING THE STANDARD

### THE FIRST TO GAIN UNIVERSAL ACCEPTANCE

The development of the accordion type, horizontally sliding fire door – as manufactured by the Won-Door Corporation – has had a profound influence on the model code requirements that regulate their use, leading to its universal acceptance for use in virtually any means of egress application.

### THE FIRST TO BE UL LISTED

The Won-Door Fireguard™ was the first accordion type fire door to successfully pass nationally recognized tests to withstand the passage of fire. Won-Door Fireguard™ products are listed by Underwriters Laboratories Inc. (UL) for up to three hours as a rated door assembly and two hours as a moveable fire wall.

### STILL ON THE CUTTING EDGE

Only the Won-Door FireGuard™ uses a state-of-the-art microprocessor activated control system to guarantee reliability and enhance door function. This technology provides almost limitless opportunities for electronic communication, supervision, alarm activation and more.

## RE-ENGINEERED FOR THE 21<sup>ST</sup> CENTURY

In 2010, Won-Door Corporation engineers accepted the challenge to develop a better and more cost-effective alternative to cross-corridor fire doors. The goal was to create a fire door system that could replace traditional side-hinged fire doors on electromagnetic hold-opens. The solution had to cost the same or less than traditional fire doors, meet all egress requirements, keep the corridor completely clear and require no more space than side-hinged doors. While seemingly impossible, the Won-Door engineers achieved all of their goals and more. In mid-2011, the Won-Door FireGuard™ CS (Compressed Stack) was officially introduced to the construction community.

# One corridor, two fire door options. Now, you have a choice.

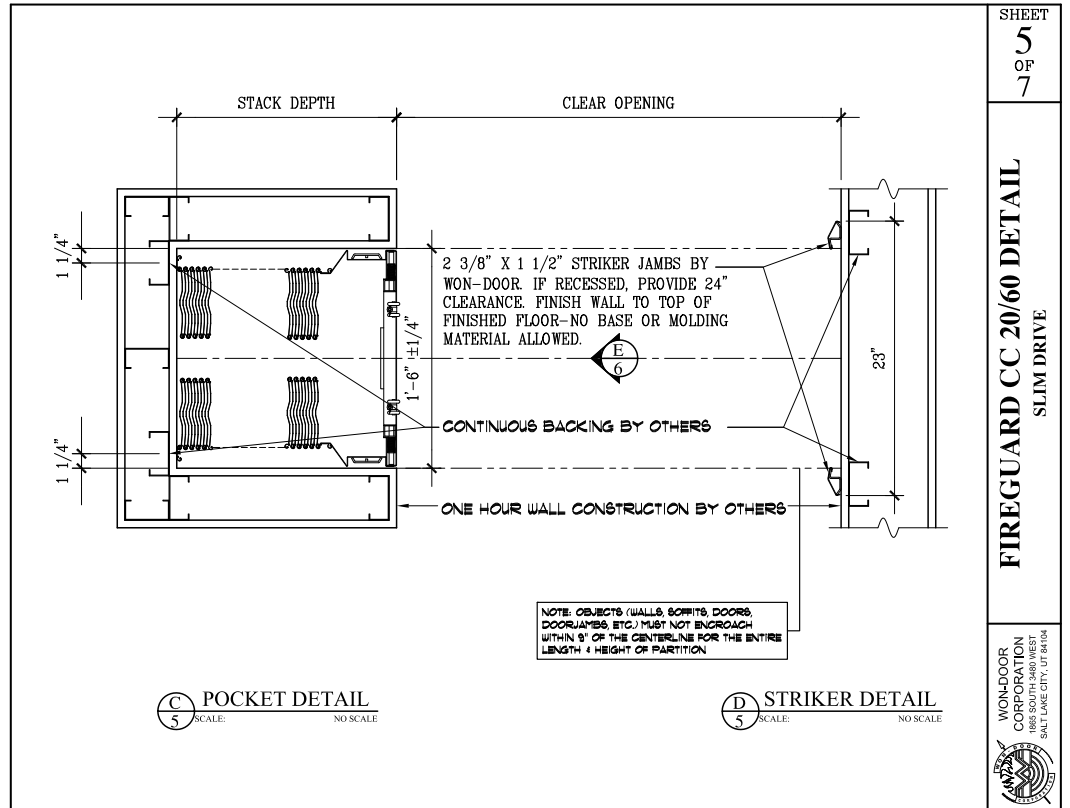
## USE WON-DOOR FIREGUARD™ CS IN LIEU OF SWING DOORS

Building codes restrict the maximum width of a swinging door leaf to 48 inches. Therefore, a pair of side-hinged doors can span an opening no more than eight feet wide. In this example, the corridor opening has been reduced to 8' x 8' to accommodate the maximum door leaf available. The cost of the opening protection includes the doors, doorframe, hardware and surrounding metal stud and drywall construction.

The new Won-Door Fireguard™ CS (Compressed Stack) Door allows for wide open corridors anywhere an opening protective is required. The width and height of the corridor can be maintained allowing for improved sight lines, natural lighting and air flow. By eliminating the need for the surrounding construction, the resulting cost of the opening protections is the same or less than other options.

The Won-Door Fireguard™ CS fire door meets all egress requirements set forth by IBC and NFPA. It is the only microprocessor controlled fire door on the market that has an Integrated Self-Supporting Track System and a unique flat lead-post design that acts as a pocket cover door.



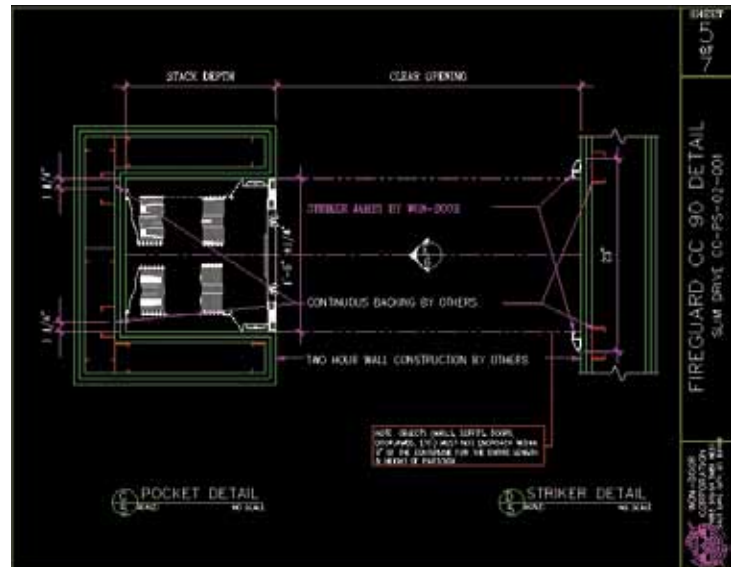


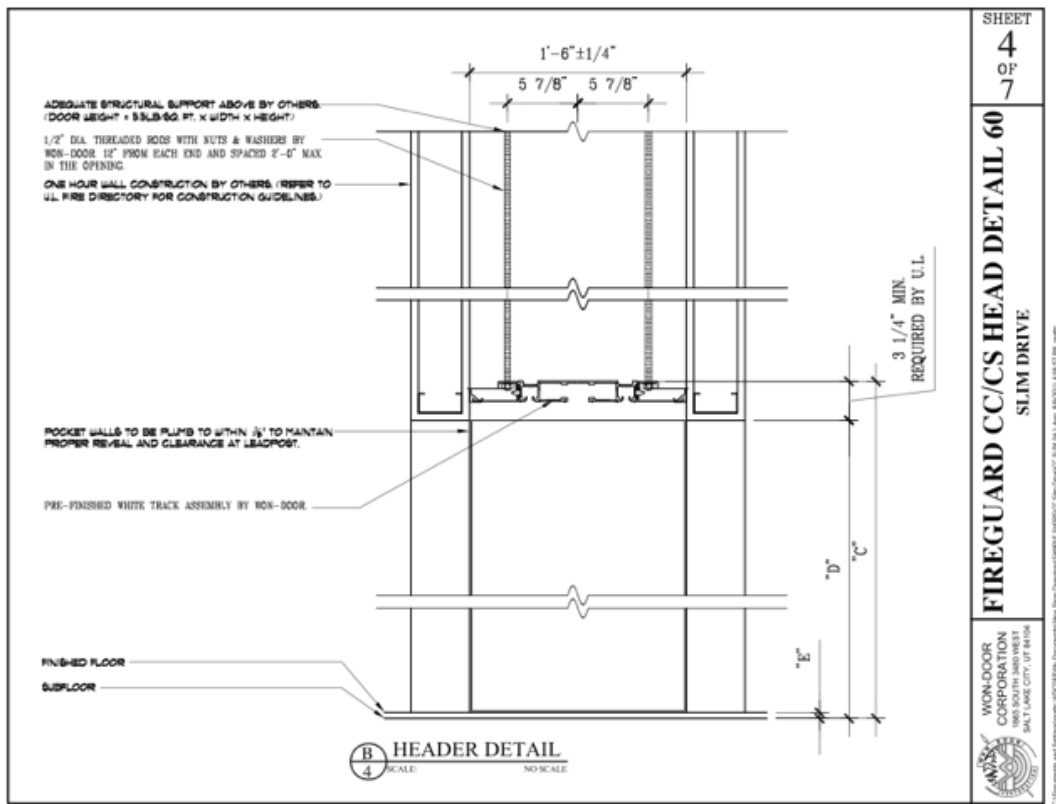
The flat lead-post design incorporating the pocket cover door is an industry first. It is part of the U.L. labeled assembly and eliminates the cost of building an unlabeled cover door on the jobsite.

## QUALITY AND SERVICE

The Won-Door team of specialists makes sure that things go smoothly every step of the way – from order to installation

- Won Door sales representatives are located throughout the United States – and around the world. They are up-to-date on all the recent changes to the model building codes and can help you find the solutions that are right for your project.
- Engineers and drafters provide technical support as you prepare your bid package, helping to simplify your task of meeting code requirements and creating design layouts.
- Factory trained installers make sure your doors are installed correctly for each application.





The Integrated Self-Supporting Track System eliminates the plywood and drywall required in traditional headers, simplifying the installation and saving natural resources.

# WON-DOOR FIREGUARD™ CS

## Compressed Stack

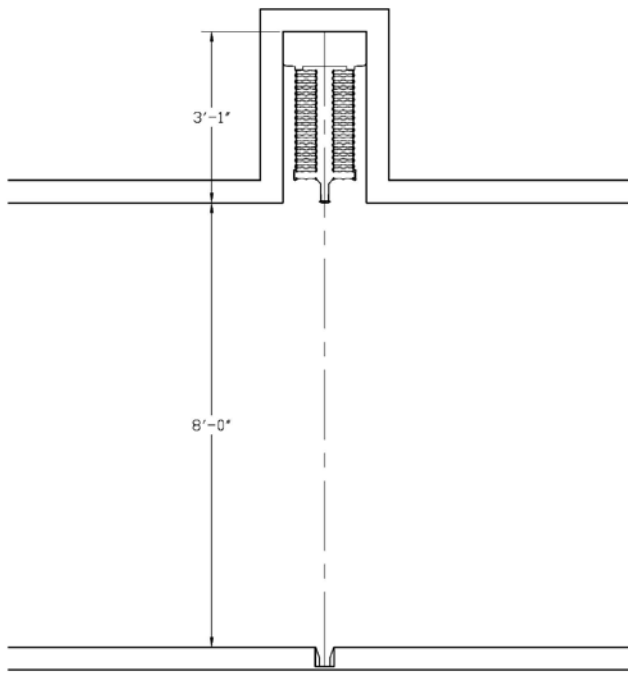
### MEANS OF EGRESS APPLICATIONS

APPLICATIONS	2009 IBC	2012 IBC	2015 IBC	2006 thru 2015 NFPA 101
Building Code Reference Performance Criteria	1008.1.2 exc.#6 1008.1.4.3	1008.1.2 exc.#6 1008.1.4.3	1010.1.2 exc.#6 1010.1.4.3	7.2.1.14 7.2.1.14

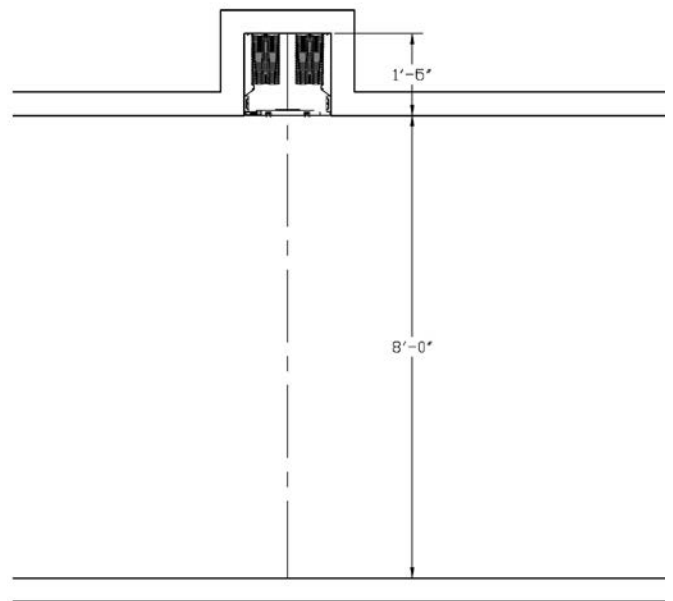


### ADDITIONAL INFORMATION

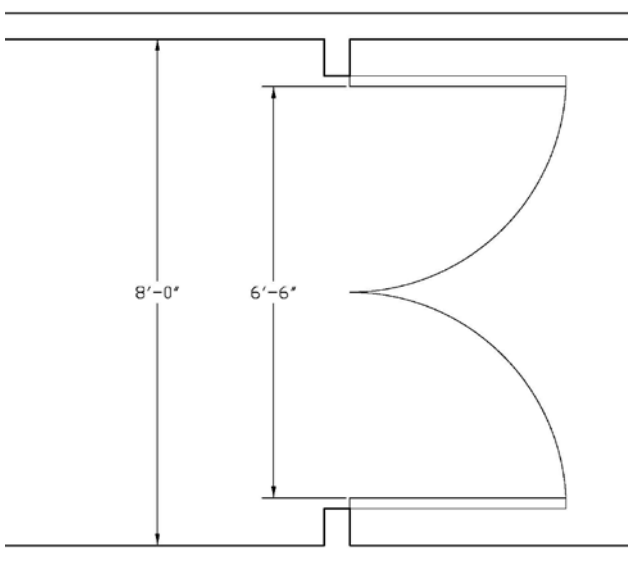
- **Size** – Maximum height is 12' 3 1/4". Maximum width is 30'.
- **Fire Rating** – Fire ratings up to 3 hours are available.
- **Security** – Access control option available.
- **Vision Panels** – One vision panel is the maximum allowed.
- **Fire Exit Hardware** – One set of Exit Hardware is included. Additional available.
- **Air Pressure** – Maximum of 0.1" W. C. is allowed. (Additional equipment is required)
- **Pocket Cover Door** – The pocket cover door is integrated into the lead post.
- **Smoke Rating** – UL 1784 Smoke Label.
- **For more information:** [www.wondoors.com](http://www.wondoors.com)



Standard Horizontal Sliding Fire Door



Won-Door Fireguard CS



Standard Side-hinged Firedoors

**POCKET DEPTH CALCULATION CHART**

Fire Guard CS		
Clear Opening Width		Pocket Depth
From	To	
3' 0"	8' 0"	1' 6"
8' 0"	8' 10"	1' 7"
8' 10"	10' 7"	1' 8"
10' 7"	11' 6"	1' 9"
11' 6"	12' 0"	1' 10"

Widths up to 30' and heights up to 12' are available.

Pocket depths are subject to change. Please contact your local Won-Door District Manager or go to [www.wondoors.com](http://www.wondoors.com)

# WON-DOOR FIREGUARD™ CS

## Compressed Stack



## SPECIFYING WON-DOOR FIREGUARD™ CS Fire Doors

### Why

Without the use of floor tracks or exposed hardware of any kind, these fire doors are the most trouble free product in the fire protection industry.

- Integrated pocket cover door
- Custom made to fit your design without compromising code requirements
- Lower maintenance costs
- Modular construction means in-place reparability
- No parts exposed to wear and tear
- Fewer service calls
- Can be reset by building management by simply pushing a button
- Backup power supply so door operates even during a power outage
- Greatly reduced stack space increases useable space
- Meets all egress requirements set forth by IBC and NFPA
- Access control options available
- Costs less than other solutions

### How

- Complete information including specifications, architectural details and contact information can be found at [www.wondoor.com](http://www.wondoor.com)
- Additionally videos, in a variety of formats, can be downloaded from our online video archive. These informative short movies cover a range of topics and code compliance.

### Learn and Earn

AIA members can learn more about Won-Door products and earn HSW Learning Units by participating in a Won-Door seminar at your location. Contact information for your local representative can be found at [www.wondoor.com](http://www.wondoor.com).



## WON-DOOR CORPORATION

Salt Lake City, UT | 800.453.8494 | [www.wondoor.com](http://www.wondoor.com) | [sales@wondoor.com](mailto:sales@wondoor.com)