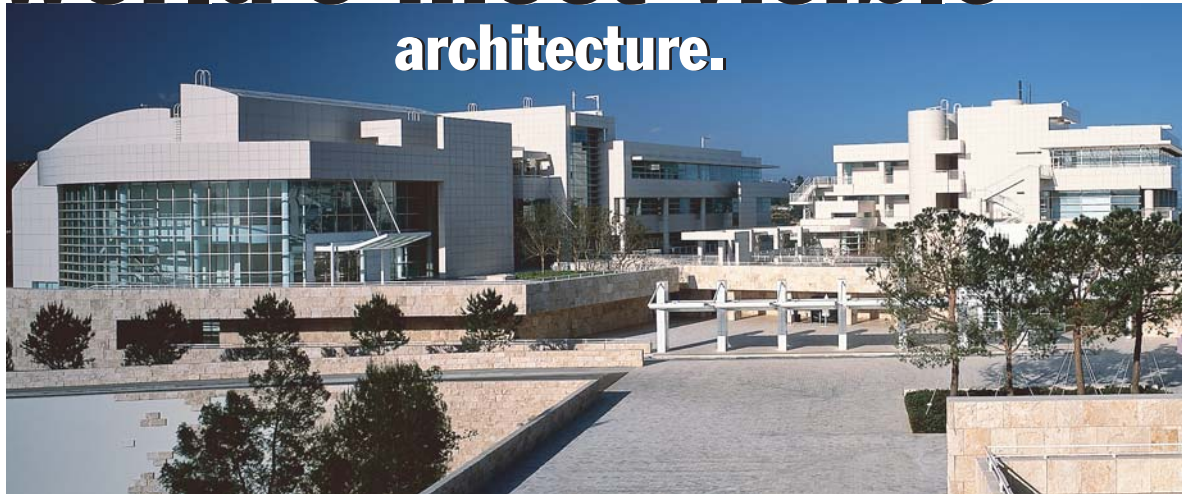




CHRISTIAN RICHTERS FOTOGRAF

# An invisible part of the world's most visible architecture.

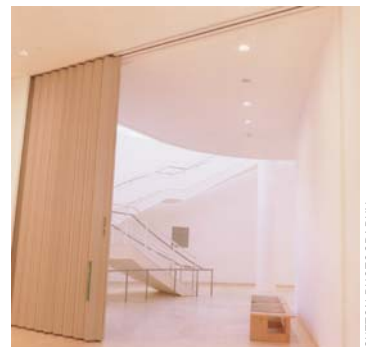


SCOTT FRANCES/ESTO

Invisible yet invaluable. Won-Door folding partitions' many unique features will enable you as a designer of museums – be they large or small, local or international, traditional or avant garde – to see your most creative plans realized.

The Guggenheim Museum in Bilbao, Spain and the Getty Center in Los Angeles are two unique environments in which the architects utilized the Won-Door FireGuard™ system to address a variety of challenging safety issues from protection of vertical openings to occupancy separation. Over 3000 square feet of Won-Door FireGuard doors were used in the Guggenheim and over 6600 square feet in the Getty Center. There was virtually no opening – whether curved or extraordinarily large – that couldn't be spanned by the patented two-track system. And Won-Door FireGuard doors are completely concealed when not in use so the grandeur of each interior was never detracted from by the sight of traditional fire doors.

A Won-Door representative, consulted early in the project, can help you to satisfy important fire and safety requirements without compromising your design.



SUTTON PHOTOGRAPHY

Spanning a variety of unusual openings, but hidden from sight when not in use, Won-Door FireGuard™ doors prove invaluable in allowing the architect to maintain the integrity of the design while satisfying safety requirements.



**World Headquarters**  
1865 South 3480 West  
Salt Lake City, UT 84104  
Telephone: 800 453 8494  
Facsimile: 801 977 9749  
web site: [www.wondoor.com](http://www.wondoor.com)

*A Leader in the Manufacture  
of Acoustical and Fire Rated  
Folding Partitions.*